



FARMHOUSE/APRON FRONT INSTALLATION INSTRUCTIONS

General Installation Notes:

- Observe and conform to all local building and plumbing codes.
- All Native Trails basins, especially undermount and apron front installations, should be installed by professional installers.
- Our basins are hand crafted and dimensions are approximate, we recommend using the actual basin for the cut-out.
- Different countertop materials will require different methods of cutting and may have other specific needs such as exposed areas of wood that may need waterproofing.
- Make sure a watertight seal exists on all drain connections.
- DO NOT place basin directly on floor. After unpacking, place basin on protective material such as foam molds from the packaging.
- **Remember to always use non-abrasive cleaners on Native Trails basins. Mild soap and water is recommended. Refer to Care & Maintenance for further information.**

Undermount Installation**

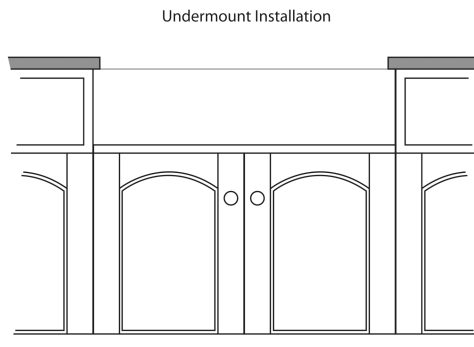


Figure 1

Flush mount Installation

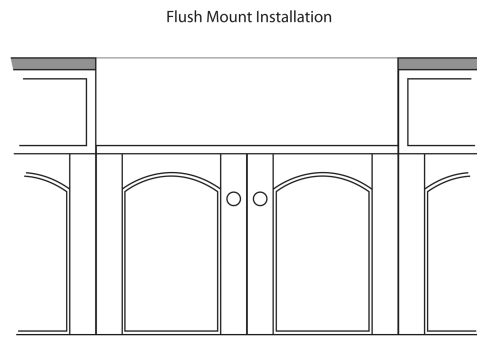


Figure 2

Caution: All installation types need to allow room for faucet installation. Ensure adequate clearance behind the basin for your faucet and backsplash, as well as the full range of motion for faucet handles and spouts.

1. Make a template and cutout

- We recommend a $\frac{1}{4}$ reveal on 3 sides when using the undermount style. For flush or built-up mount cut countertop along the outside line of basin profile. Apron fronts are designed to be installed $\frac{3}{4}$ extended out beyond the front end of countertop.
- Templates are not provided due to the hand crafted nature of our basins and installation application chosen. Use the actual basin being installed for proper measurements.
- After centering the basin and allowing for faucets, handles and backsplashes, use a pencil to outline the basin as your guide for the cut-out, allowing for any reveal (if needed) before the actual cutting.
- Depending on the installation type, make proper cut-out in the countertop.

2. Place the basin

- Place the basin on top of cabinet or into the cabinet front cut-out.
- Apply silicone as a gasket between sink and cabinet.

3. Install countertop

- Apply a bead of silicone around top edge of basin. Place countertop around the basin. Make sure that it is centered properly. Remove any excess silicone from the lip or any surfaces.

4. Install the drain according to the drain's installation instructions.

When cleaning up after installations, DO NOT USE ABRASIVE CLEANERS, as they may scratch and change the basin surface and finish. Use warm water, a soft cloth and a non-abrasive soap (such as dish soap) to clean the surface. Refer to Care and Maintenance Instructions for further information.

**Typical undermount installation with ¼" reveal recommended.